



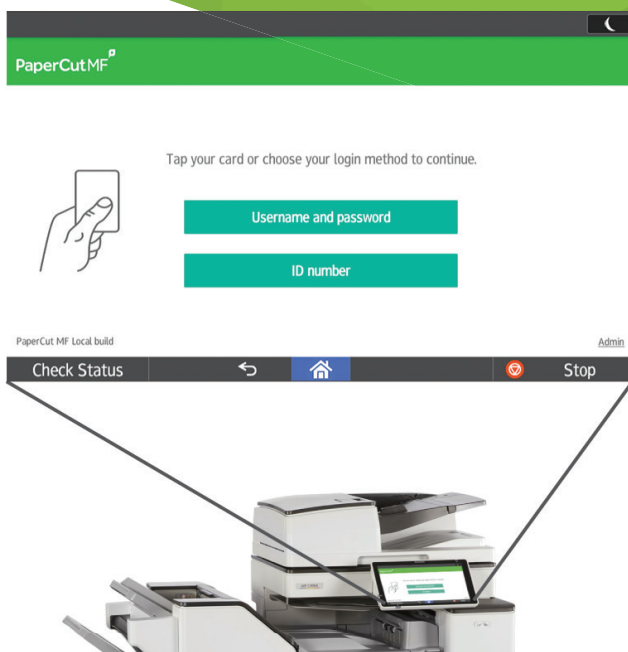
**ecoprintQ**

Powered by PaperCut<sup>®</sup>



# RICOH PaperCut MF Embedded

PaperCut MF provides integration with RICOH MFDs, enabling the tracking, charging or billing of “off the glass” copying, printing, faxing and scanning.



Please contact your Authorized Dealer for details



ecoprintQ

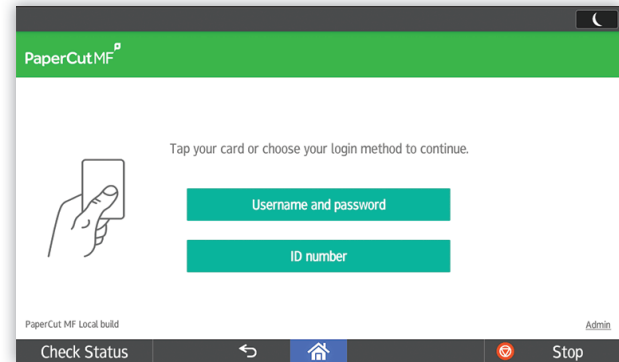
Powered by PaperCut<sup>®</sup>

RICOH  
MFD Embedded

## > Authentication

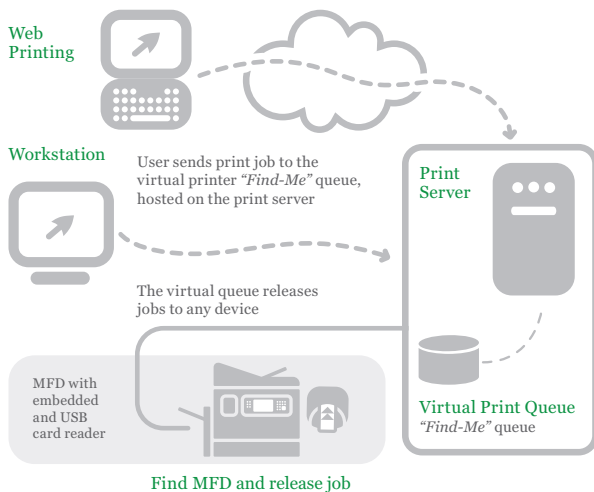
Leverage your existing single sign-on infrastructure by allowing users to log in with the same username and password used elsewhere on the network. No need to remember and maintain multiple logins!

- Integrate with existing single sign-on environments such as:
  - Microsoft Active Directory
  - Apple Open Directory
  - Novell eDirectory
  - Other LDAP, NIS or POSIX environments
- Optionally authenticate with swipe cards, proximity cards and optional PINs for extra security.
- Use your organization's logo and colors scheme.



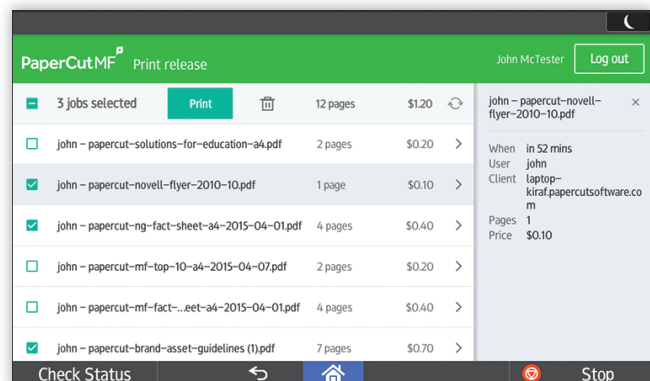
Authenticating with a username and password at a Ricoh MFD or using an ID Card.

## > Follow Me and Secure Print



*A global print queue provides convenience for end users and helps keep documents secure*

Follow Me Print also known as Find Me printing provides users with the option to use any multi-function device, an environment where users send the jobs to a single virtual global queue and then they walk up and log on to any Embedded Enabled MFD device nearby to have their print job pulled from the global queue and printed on the spot.



Releasing a print job from a Ricoh MFD



ecoprintQ

Powered by PaperCut

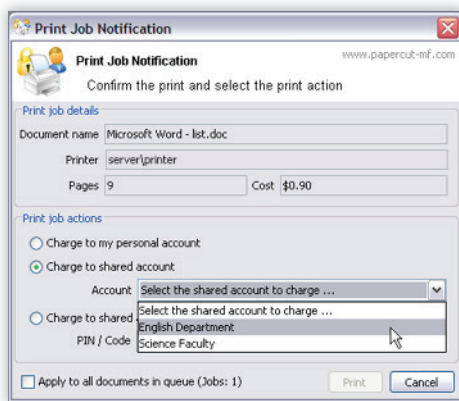
RICOH  
MFD Embedded

## > Flexibility to Charge Accounts

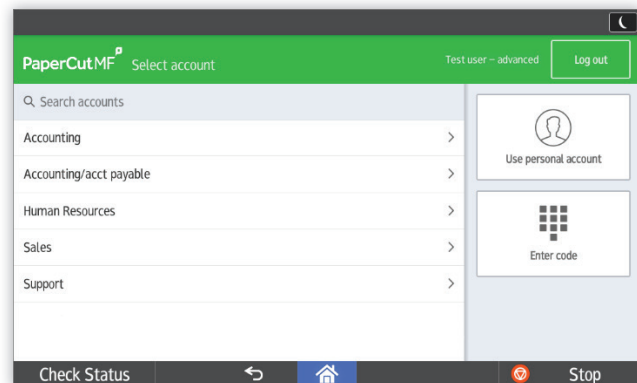
The embedded copier interface is consistent with the workstation print interface, meaning users only have to learn one system and one set of terminology. Jobs may be allocated to shared accounts that represent departments, projects or clients.

If enabled, shared/dept./client accounts can be accessed via:

- Selection from Account List
- Quick entry via Account code/PIN
- Search by Account keyword



Charging to a shared account while printing from a workstation



Charging to a shared account while copying

## > Track and Control Copy/Scanning/Faxing



- After authenticating with their user account, users select the account to charge for their copies/fax/scan.
- Users are provided with real-time feedback of account balance and cost as the job proceeds
- Charge different types of copying at different rates
- Restrict access to color copying (SDK 4+)
- All usage reported centrally in the PaperCut logs
- Optionally apply quotas to limit what users can copy



ecoprintQ

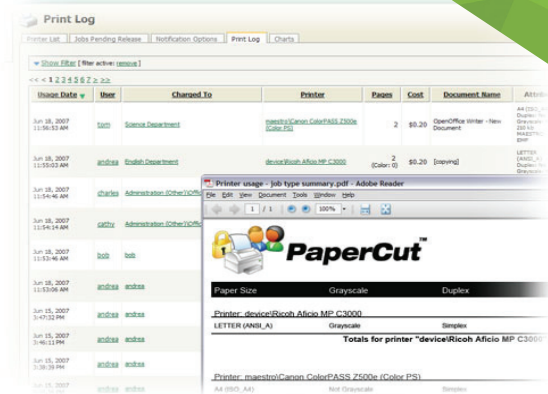
Powered by PaperCut

RICOH MFD Embedded

## Consolidated Reporting

Consolidated management and reporting in either summary or detailed formats are readily available at the click of a button for all copies and prints across your entire fleet:

- By device (printers & copiers)
- By user
- By shared account (client, department, faculty)
- By location
- By date and time / period
- By environmental impact



## Supported Devices

PaperCut MF supports all Ricoh MFDs with Embedded Software Architecture (ESA) SDK/J versions 2/4/5/7/10/11/12, or SmartSDK version 2.10 or later.

<b>Ricoh SOP Optimized (SmartSDK) version 2.10 or later:</b>
MP 402, 501, 601, 305+, 2553, 3353, 6503, 7503, 9003 / MP CW1201, CW2201 / MP C306, C406, C2094, C2594, C2004, C2504, C3004, C3504, C4504, C5504, C6004
<b>Ricoh Java (SDKIJ) versions 2/4/5/7/10/11/12:</b>
A Java VM card is required and must be installed in the MFD by a Ricoh supplier.
<b>Compatible Ricoh SDKIJ 10/11/12 devices:</b>
MP 301, 402, 501, 601, 305+, 2501, 2554, 3054, 3554, 4054, 5054, 6054, 401, 2553, 3053, 3353, 4002, 5002, 6002, 7502, 9002 / MP C306, C406, C401, C402, C2094, C2594, C2004, C2504, C3004, C3504, C4504, C5504, C6004, C2003, C2503, C3003, C3503, C4503, C5503, C6003, C6502, C8002, C305, C3002, C3502, C4502, C4502A, C5502, C5502A / MP CW1201, CW2201, CW2200 / Pro C7100, C7100S, C7110, C7110S, C9100, C9110, 8100S, 8110S, 8120S / Pro C5100S, C5110S
<b>Compatible Ricoh SDKIJ 4/5/7 devices:</b>
MP 2352SP, 2852SP, 3352SP, 6001SP, 7001SP, 8001SP, 9001SP, 2550SP, 3350SP, 4000SP, 5000SP, 2851SP, 3351SP, 4001SP, 5001SP / MP W3601, W5100, W7140 / MP C2051, C2551, C300, C400, C3001, C3501, C4501, C4501A, C5501, C5501A, C6501, C7501, C2050, C2550, C2800, C3300, C4000, C5000, C6000, C7500 / Pro C651EX, C751EX, C550EX, C700EX / Pro 907EX, 1107EX, 1357EX / Pro C720S, C900S, C901S
<b>Compatible Ricoh SDKIJ 2 devices:</b>
615C, Pro 906EX, 1106EX, 1356EX / MP C1500, C2000, C2500, C3000, C3500, C4500 / MP 5500, 6000, 6500, 7000, 7500, 8000, 9000, 1100, 1350

If your device model is not listed, please contact your Ricoh dealer to confirm that the device supports ESA SDK 2.x, 4.x, 5.x, 7.x or higher, and has an LCD touchscreen.

Functionality:	SDK4+	SOP
Follow Me (Auto Release at Login)	✓	✓
Follow Me (Release from List)	✓	✓
Card Reader Integration (i.e. HID)	✓	✓
ID # Only display authentication	✓	✓
Card Only authentication	✓	✓
Card + PIN authentication	✓	✓
Self-association of Card w/user	✓	✓
Track Faxing	✓	✓
Track USB Printing	X	X
Track Scanning (i.e. to email, to USB)	✓	✓
Auto Populate email when scanning (FROM address)	✓*	✓*
Auto Populate email when scanning (TO address)	✓	✓
Customizable Display Logos / Colors	✓	X
Restrict Color Copying	✓	✓
Zero Stop	✓	✓
Share Acct selection from List	✓	✓
Share Acct keyword search	✓	✓
Share Acct selection by code/PIN	✓	✓
Security Rating (Based on Best Practice 1-5)	4	4
Device Extra License needed	Java VM Card	X

\* Via a third party application.  
\* Globalscan & NSI AutoStore